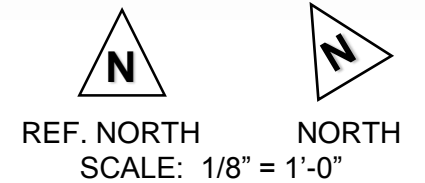
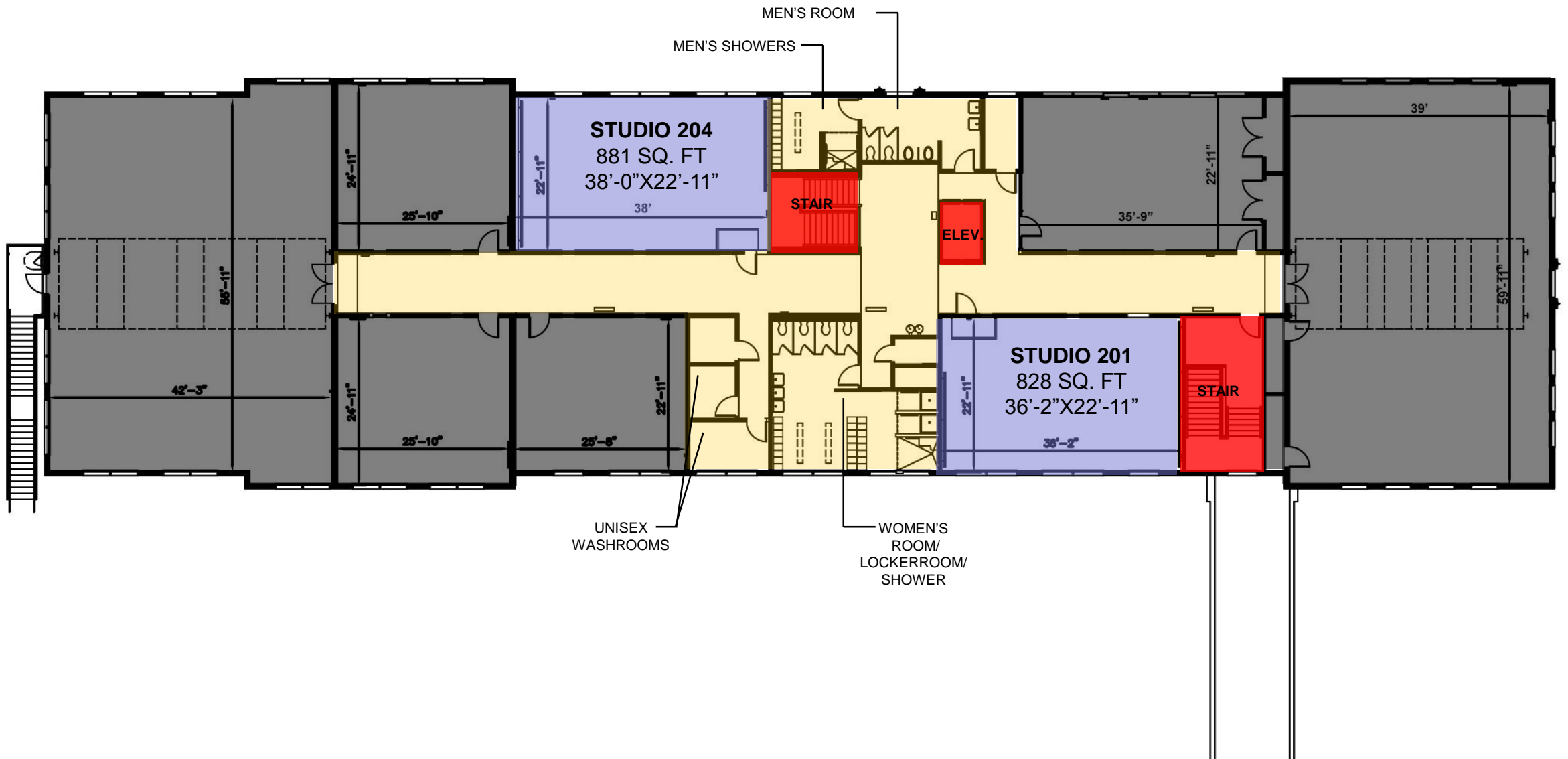


NOTE: CEILING HEIGHTS AT LEASABLE SPACES ARE 12'-0" UNLESS NOTED OTHERWISE

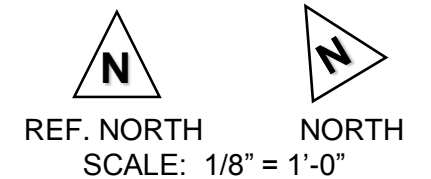


**DOROTHEA LAUB DANCE PLACE
BUILDING 175 – FIRST FLOOR
August 2016**

OFFICE AREA = 8,711 SQ. FT
FLOOR COMMON AREA = 3,161 SQ. FT
TOTAL FLOOR RENTABLE AREA = 11,872 SQ. FT



NOTE: CEILING HEIGHTS AT LEASABLE SPACES ARE 12'-0" UNLESS NOTED OTHERWISE



**DOROTHEA LAUB DANCE PLACE
BUILDING 175 – SECOND FLOOR
August 2016**

OFFICE AREA = 9,410 SQ. FT
FLOOR COMMON AREA = 1,820 SQ. FT
TOTAL FLOOR RENTABLE AREA = 11,230 SQ. FT